

UPERFECT
M220T01 22 Inch
1080P Portable
Monitor



UPERFECT M220T01 22 Inch 1080P Portable Monitor User Manual

[Home](#) » [UPERFECT](#) » UPERFECT M220T01 22 Inch 1080P Portable Monitor User Manual 

Contents

- [1 UPERFECT M220T01 22 Inch 1080P Portable Monitor](#)
- [2 Preparations](#)
- [3 Specifications](#)
- [4 Connecting](#)
- [5 HDMI signal transfer](#)
- [6 Setting Up\(Windows10\)](#)
- [7 Screen Adjustment](#)
- [8 Service Support](#)
- [9 FAQs](#)
- [10 Documents / Resources](#)
 - [10.1 References](#)
- [11 Related Posts](#)

UPERFECT

UPERFECT M220T01 22 Inch 1080P Portable Monitor



In order to ensure your safe use of this product, please read this manual carefully before using this product and keep it properly.

- Email: help@upperfectmonitor.com

Preparations

Checking the Package Contents



Portable Monitor



Power Adapter



User Guide



Mini HDMI Cable



Type-C to Type-C Cable *2

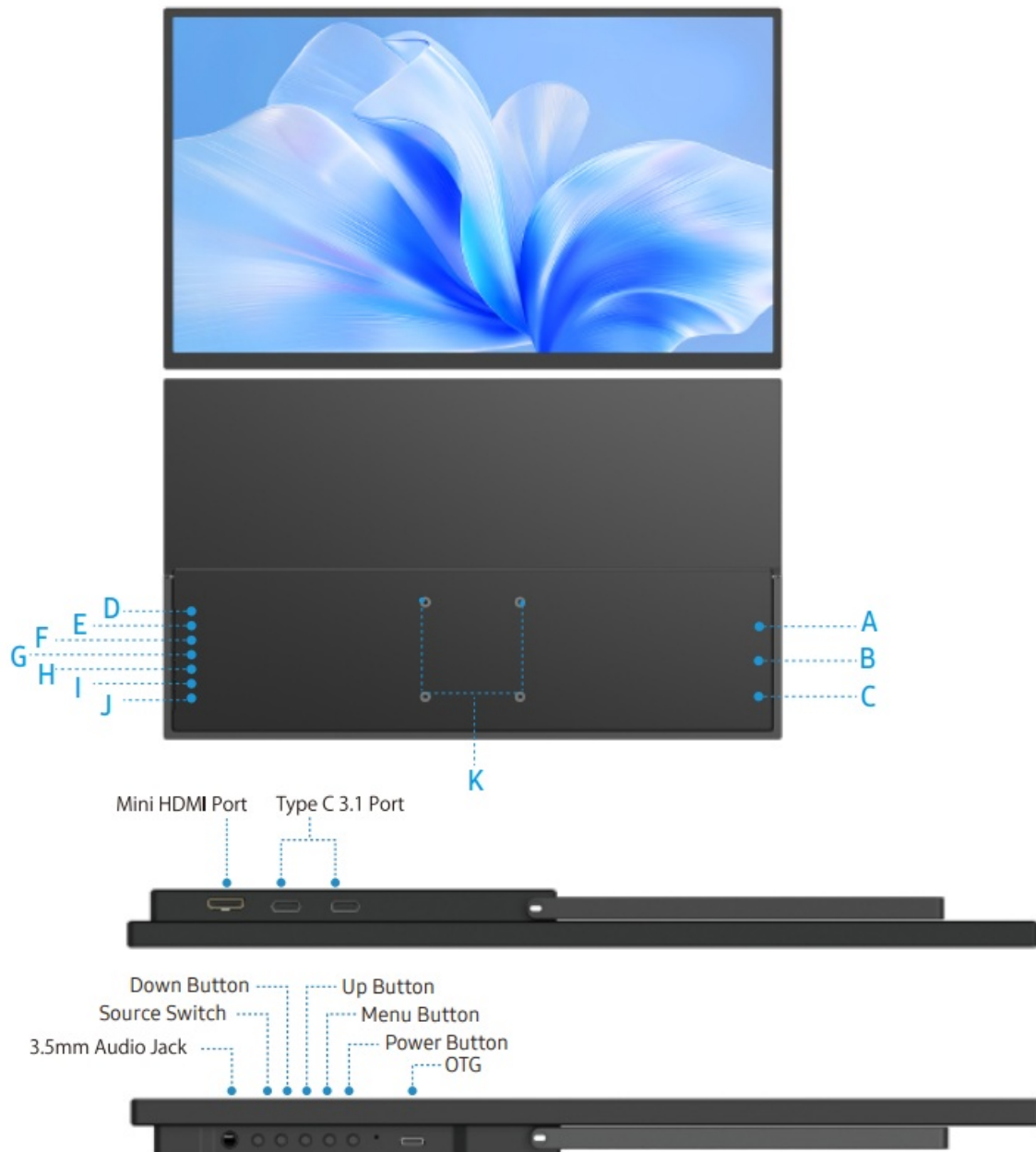
Note:

- If any of the above items is damaged or missing, please contact us immediately.

(help@uperfectmonitor.com)

- The appearance of the components may differ from the images shown.

Monitor Introduction



Product Appearance & Interface Function Introduction

- A & B: Type C 3.1 Port
 - Full featured type c port. For signal and power transmission.
- C: Mini HDMI Port
 - For Audio and Video Signal Transmission.
- D: OTG
- E: Power On/Off Button
 - Long press to power off
 - Short press to power on or return

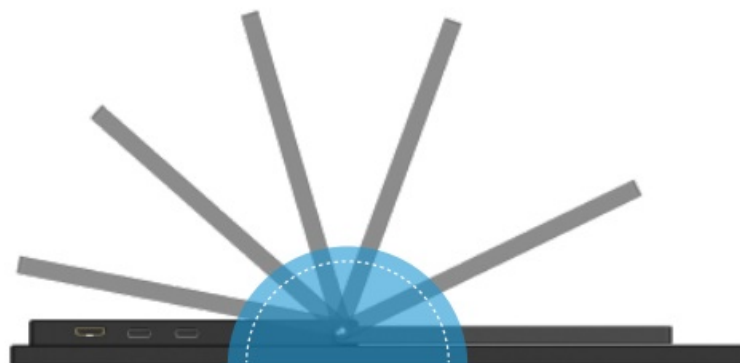
- F: Menu Button
 - Press MENU to enter the OSD (On-Screen Display) menu; Short press to confirm/ turn on the monitor;
 - Long press to exit/ turn off the monitor.
- G: Up Button
- Long press to power off
 - Short press to power on or return
- G: Down Button
- I: Source Switch
- J: 3.5mm HP Port
 - For audio output.
- K: VESA
 - 4 M4*4mm holes.

The functions of the bracket & keyboard

The bracket supports 180° opening up.



0°~180° Adjustable



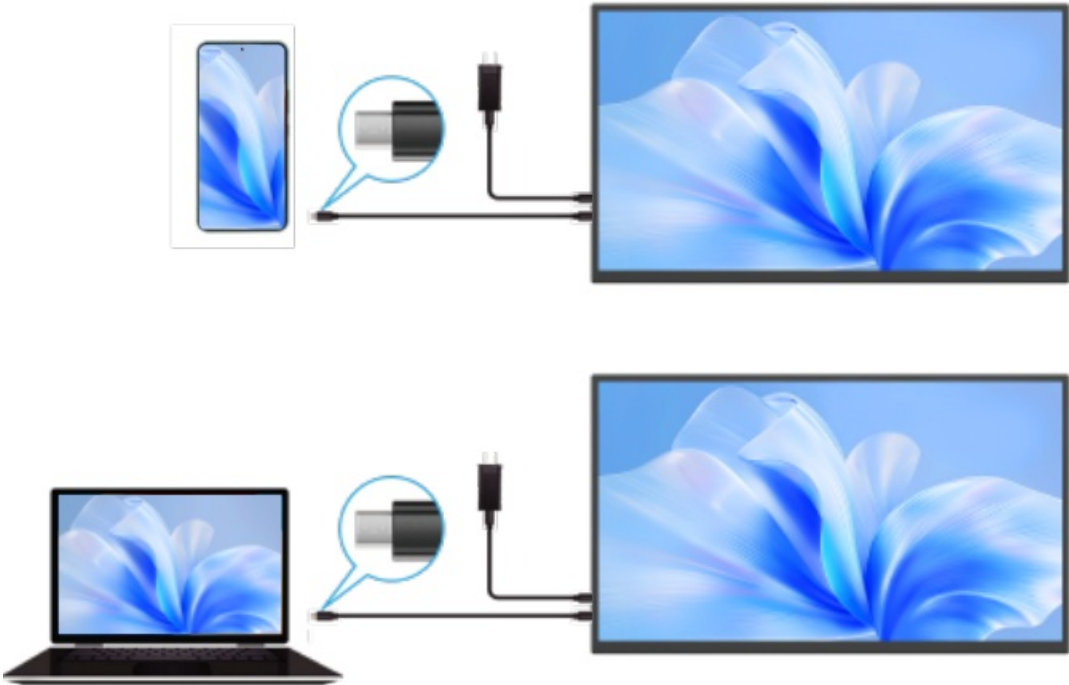
Specifications

Color	Black
Model	M220T01
Resolution	2560*1440
Brightness	300 cd/m²
Color Gamut	72% NTSC, 100% sRGB
Display Color	16.7M(8 Bit)
VESA	75*75MM(M4*4mm)
Interfaces	Mini HDMI
	Type C 3.1 Port * 2
	3.5mm Audio Port
Panel Type	IPS

Connecting

TYPE-C signal transfer

Note: For a more stable power supply, it is recommended to use our original power adapter to power.



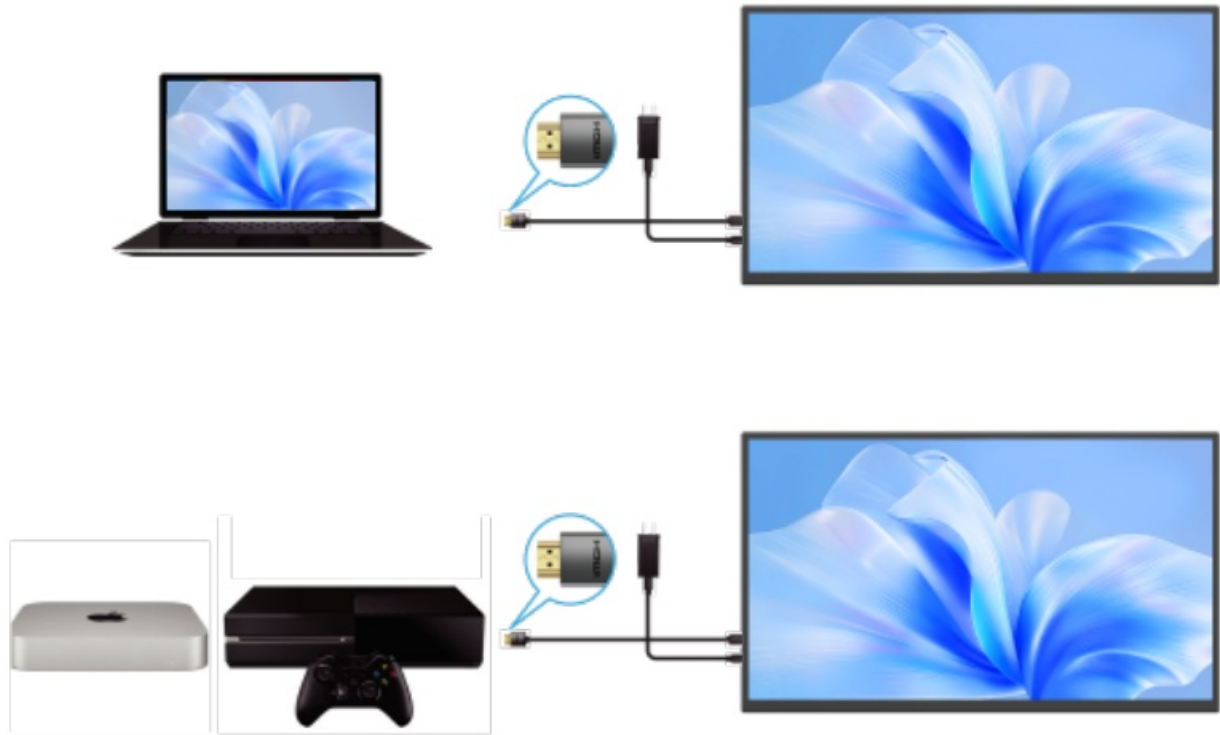
Supported Devices & Models Type-C

Laptop Model	
Brand	Model
Apple	Macbook 12" Macbook 13" 2017 MacbookPro 2016/2017/2018 New Macbook Air 2018 iPad Pro 2018
Google	ChromeBook Pixels PielBook Pen MagicBook
Lenovo	YogaC930 Yoga 5 Pro Yoga 6 Pro ThinkPad XI Carbon2017 Miix 720 Legion Y7000/Y7000P/Y7000K
Dell	XPS13 XPS15 G3/G5/G7 Inspiron 5000/7000
HP	Pavilion X2 EliteBook Folio G1 EliteBook 1050 G1 Microsoft Surface Book 2
ASUS	U306 U321 series U4100 ROG series
Huawei	Matebook D Matebook X Matebook X Pro Matebook E Matebook 13
Razer	Blade Stealth
More Brands	Continuous update...
Note: Please check the Type C port of your PC/Laptop whether supports audio and video signal transmission(Thunderbolt3). If it is just a Type C for charging, you need connecting HDMI to transmit signal.	

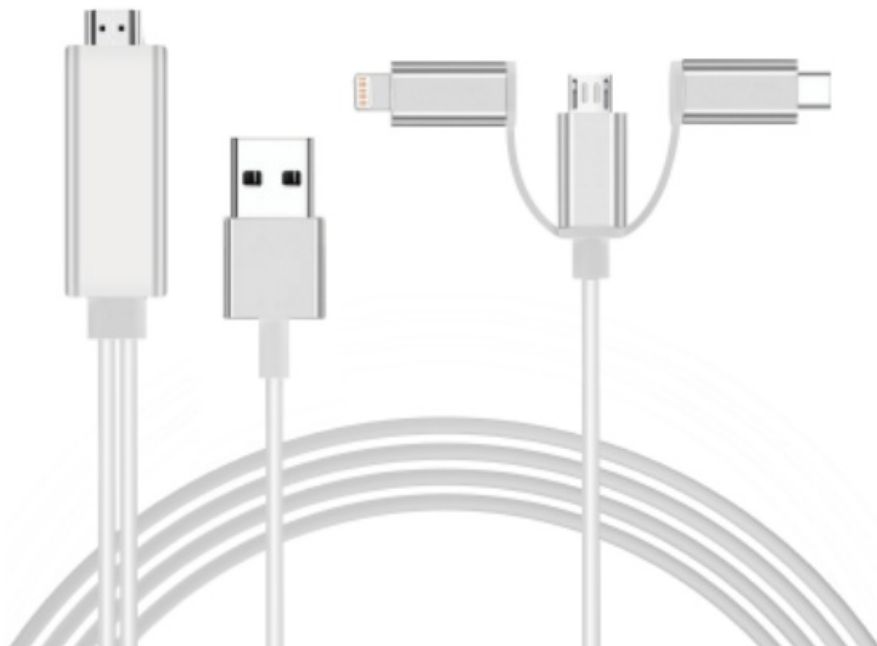
Mobile Phone Model	
Brand	Model
Samsung	S8 S8+ S9 S9+ S10 S10+ S10e Note8 Note9
Huawei	Mate10 Mate10 Pro Mate20 Mate20 Pro Mate 20X Mate P20 Mate P20 Pro HonorNot10 Mate P30 Mate P30 Pro
More Brands	Continuous update...
Note: Please check the Type C port of your phone whether supports audio and video signal transmission (USB 3.1).	

HDMI signal transfer

Note: For a more stable power supply, it is recommended to use our original power adapter to power.



Note: If the Type-C port of your phone is not a full-featured Type-C port, or your phone is micro USB port, Lightning port, for example: Google Pixel 3, you need to buy the adapter as below.



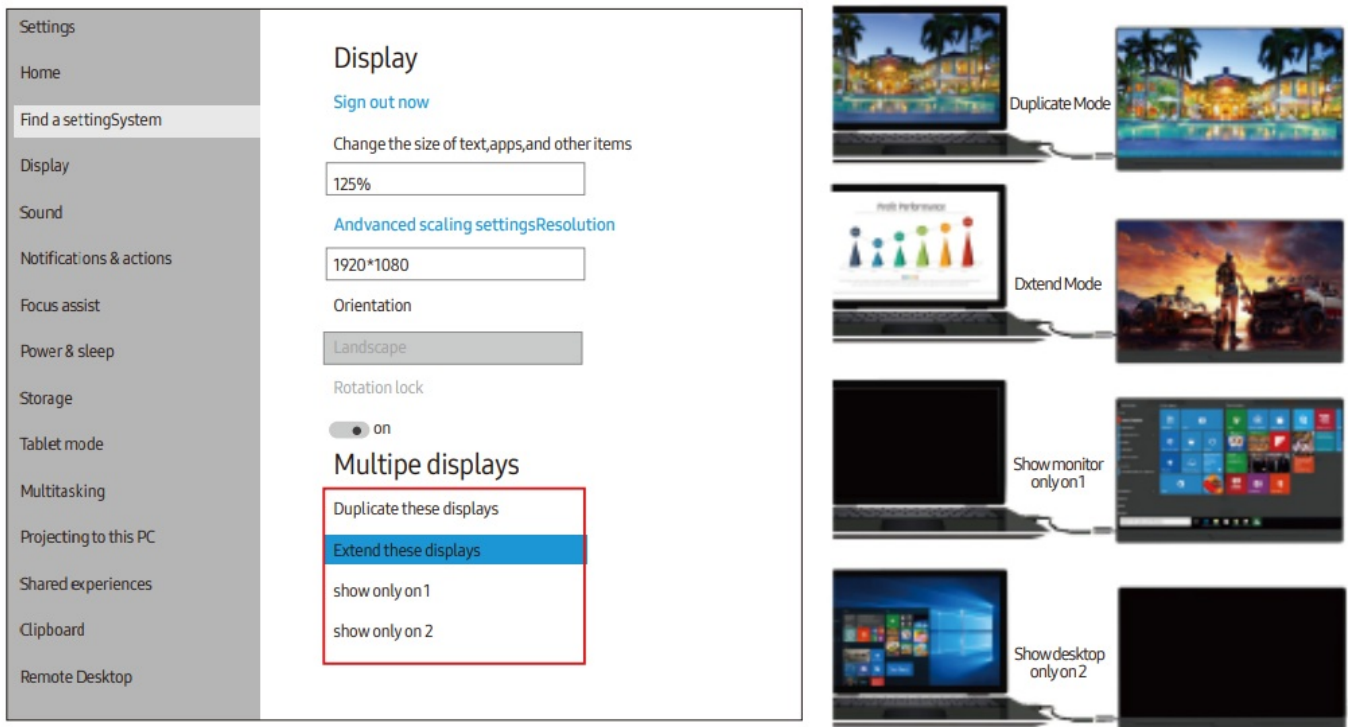
Setting Up(Windows10)

Extend Mode /Duplicate Mode/Display Mode

Way1: Set on the device'Display Settings

- Verify that your cables are connected properly to the new monitors.
- Right-click anywhere on your desktop and select Display settings to open the Display page.
- Scroll down to Multiple displays, then select an option from the drop-down list to determine how your desktop

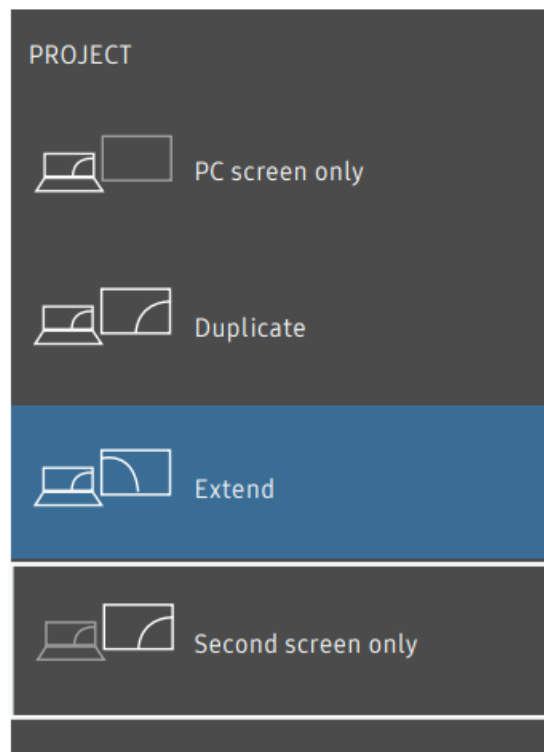
will display across your screens. For the largest work area, select Extend desktop.



Note: If you cannot see the additional monitor(s) listed, click Detect. If does not work, try restarting your computer and do steps again.

Way2: Set via Windows key + P keyboard shortcut

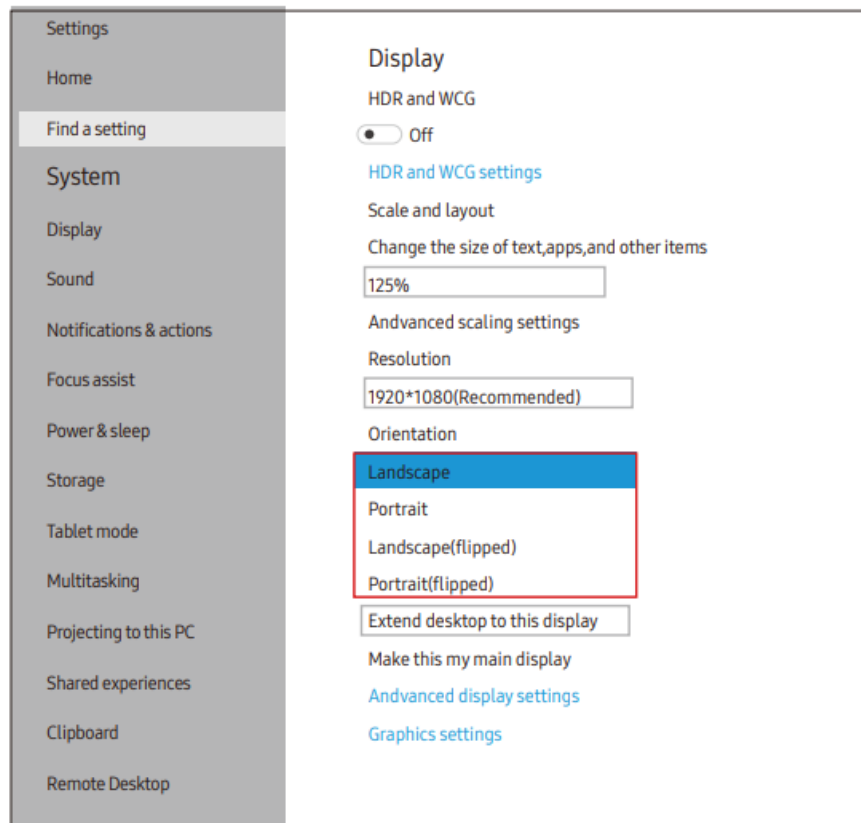
- Verify that your cables are connected properly to the new monitors.
- Enter the “Windows” key and “P” keyboard at the same time.
- select an option from the drop-down list to determine how your desktop will display across your screens. For the largest work area, select Extend desktop.



Note: If you cannot see the additional monitor(s) listed, click Detect. If does not work, try restarting your computer and do steps again.

Rotate the Screen

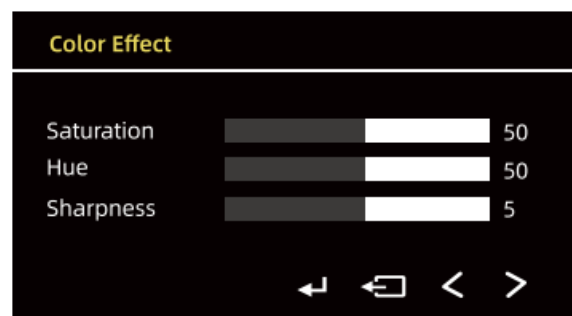
1. Verify that your cables are connected properly to the new monitors.
2. Right-click anywhere on your desktop and select Display settings to open the Display page.
3. Under the “Select and rearrange displays” section, select the monitor that you want to adjust.
4. Under the “Scale and layout” section, use the Orientation drop-down menu to select Landscape or Portrait screen.



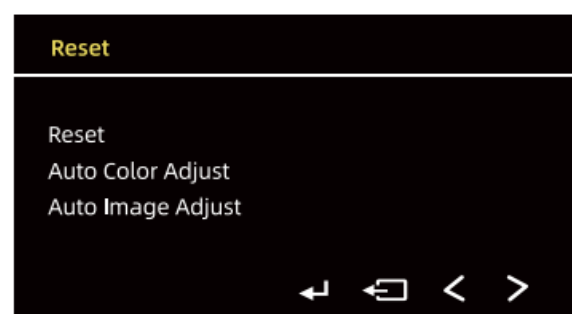
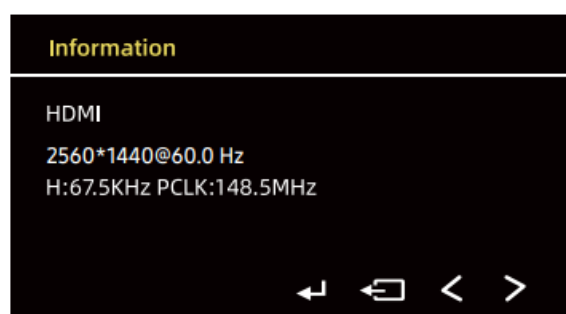
Screen Adjustment

On-Screen Display Menu Introduction

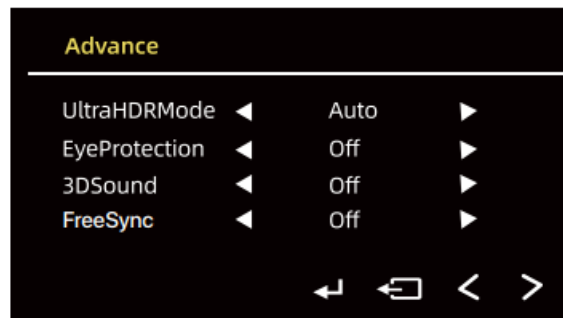
- PICTURE
- COLOR EFFECT



- INFORMATION
- RESET



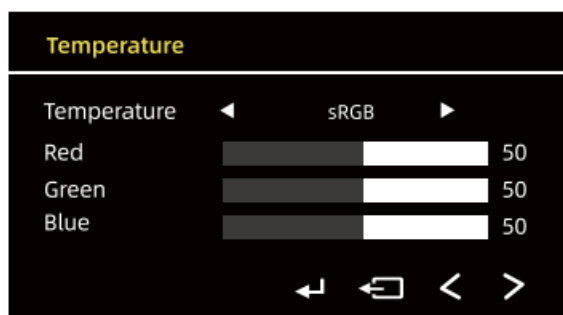
- ADVANCE



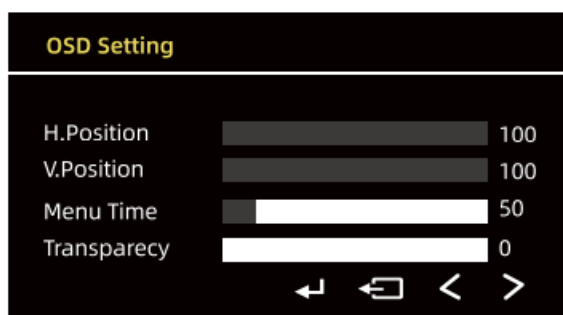
- OPTION



- TEMPERATURE



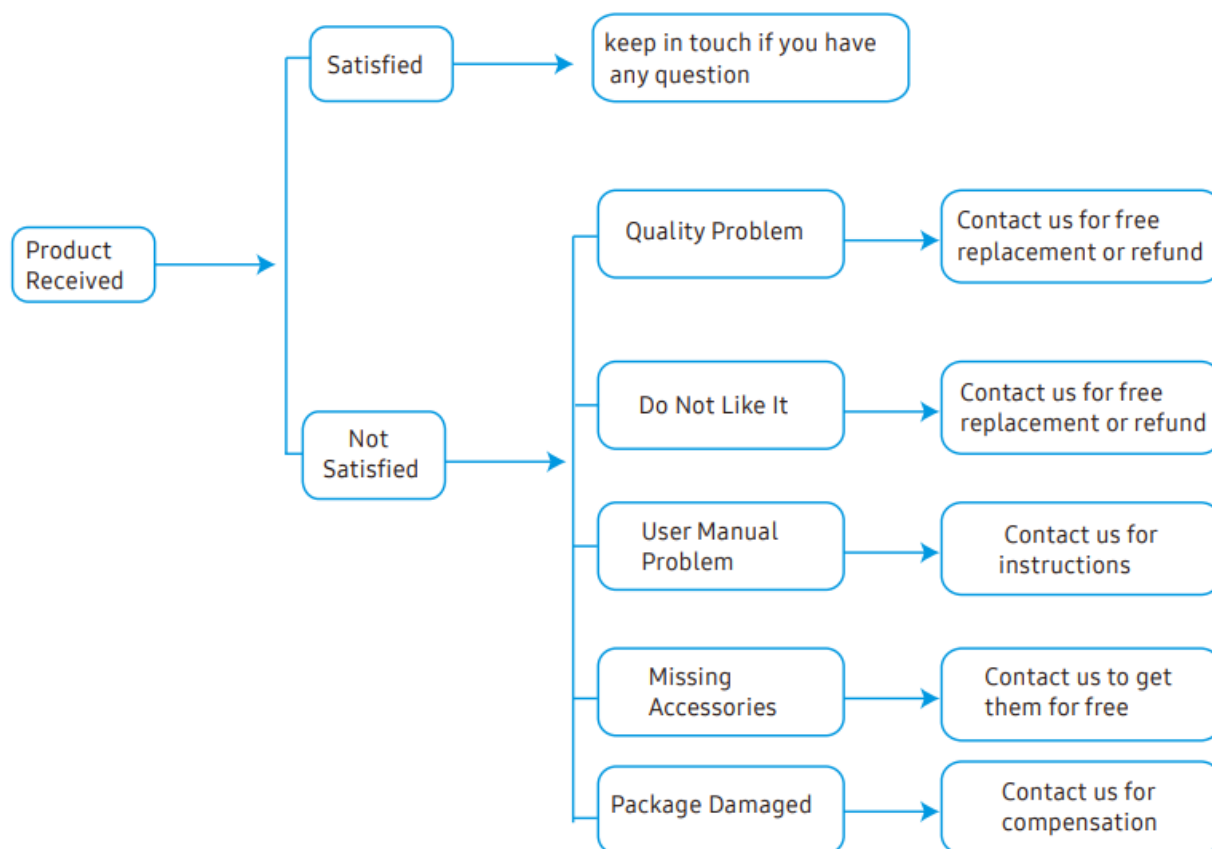
- OSD SETTING



Service Support

Dear Customer,
Thank you for purchasing the Portable USB Monitor! We offer 100% money back guarantee in 30 days and 90

days replacement, 12 month warranty for any issue, professional tech support to ensure no-worry service. Any query or problem, please contact us via help@uperfectmonitor.com



FAQs

Abnormal conditions occurred - like the splash screen or spots when using the monitor.

It is caused by an insufficient power supply. Monitor required large power support. Please use the attached genuine cable provided to power the monitor. If use the mobile power bank to power the monitor, please confirm whether the mobile power bank is a PD power bank that has reached 30W or more. Please contact us if you need a power bank. If the resolutions above do not work, please try another computer device. If it failed, please contact us for the replacement of the cable.

The monitor fails to start and the screen is blank.

Please TURN ON the power supply. Please check whether the connection is correct. Please unplug the cable and reconnect. Please use the genuine cable and the power adapter. Note: Most Samsung mobile phones can not power for the monitor, please power the monitor with an additional power adapter. Please contact us if the troubleshooting above does not help.


The display is TURN-ON, shows NO SIGNAL or POWER SAVING.

Please check if the mobile phone supports USB3.1./Thunderbolt 3. when you are using Type-C to Type-C to connect the monitor and the mobile phone. An HDMI adapter is required to transfer the signal if your mobile phone does not support USB3.1./Thunderbolt 3.Please check whether the connection is correct. Please use the genuine cable provided. Please try another computer. If it failed, please contact us for the replacement of the cable.

The monitor is constantly restarting.

It is caused by an insufficient power supply. Monitor required large power support. Please use the attached genuine cable provided to power the monitor.If use the mobile power bank to power the monitor, please confirm whether the mobile power bank is a PD power bank that has reached 30W or more. Please contact us if you need a power bank. If the resolutions above do not work, please try another computer device. If it failed, please contact us for the replacement of the cable.

Documents / Resources

	UPERFECT M220T01 22 Inch 1080P Portable Monitor [pdf] User Manual M220T01 22 Inch 1080P Portable Monitor, M220T01, 22 Inch 1080P Portable Monitor, 1080P P ortable Monitor, Portable Monitor, Monitor
--	---

References

- [User Manual](#)

v class="57be77cde1a6ddba353152d58844f9cf" data-index="3" style="float: none; margin:10px 0 10px 0; text-align:center;">

[UPERFECT M185E04 18.5 Inch 1080P Portable Monitor User Manual](#)

UPERFECT M185E04 18.5 Inch 1080P Portable Monitor Preparations Checking the Package Contents Note If any of the above...



- [UPERFECT M185F01 18.5 Inch 1080P Portable Monitor User Manual](#)

M185F01 18.5 Inch 1080P Portable Monitor

<
/li>



- [UPERFECT M173K01 17.3 Inch 1080P Portable Monitor User Guide](#)

M173K01 17.3 Inch 1080P Portable Monitor User Guide M173K01 17.3

Inch 1080P Portable Monitor Thank you for purchasing...



- v class="rp4wp-related-post-image">

[UPERFECT 156G16 16.6 Inch Portable Touch Monitor User Manual](#)

156G16 16.6 Inch Portable Touch Monitor 120Hz



- [UPERFECT M185E04 18.5 Inch 1080P Portable Monitor User Manual](#)

UPERFECT M185E04 18.5 Inch 1080P Portable Monitor Preparations

Checking the Package Contents Note If any of the above...

<
/li>

[Manuals+](#), [Privacy Policy](#)

This website is an independent publication and is neither affiliated with nor endorsed by any of the trademark owners. The "Bluetooth®" word mark and logos are registered trademarks owned by Bluetooth SIG, Inc. The "Wi-Fi®" word mark and logos are registered trademarks owned by the Wi-Fi Alliance. Any use of these marks on this website does not imply any affiliation with or endorsement.